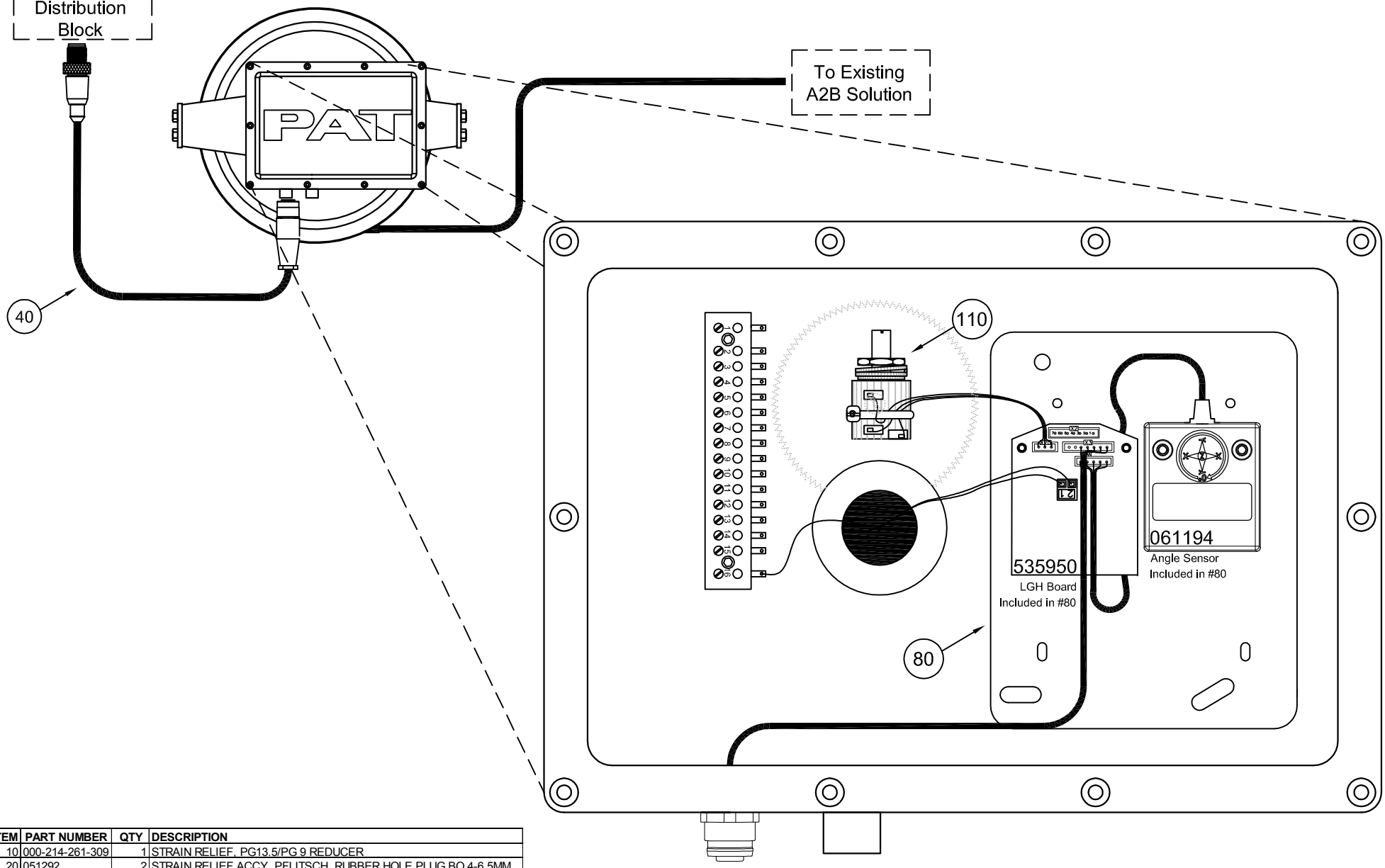



REV	ECN	DESCRIPTION	BY	APV	DATE
A	-	Initial release	RBM	JM	09/05/17

To CAN  
Distribution  
Block

To Existing  
A2B Solution



ITEM	PART NUMBER	QTY	DESCRIPTION
10	000-214-261-309	1	STRAIN RELIEF, PG13.5/PG 9 REDUCER
20	051292	2	STRAIN RELIEF ACCY. PFLITSCH RUBBER HOLE PLUG BO 4-6.5MM
30	051293	2	STRAIN RELIEF ACCY. PFLITSCH RUBBER HOLE PLUG BO 9-13MM
40	27866	1	0935 253 103/15 M
50	000-214-340-013	1	STRAIN RELIEF, PG13.5 HOLE PLUG
60	000-214-261-109	1	STRAIN RELIEF, PG11/PG9 REDUCER
70	000-214-340-011	1	STRAIN RELIEF, PG11 HOLE PLUG
80	061185	1	SENSOR ASSY, LENGTH/ANGLE, W/GX/CAN
90	002-050-206-012	3	SCREW, 6mm X 12mm SOCKET CAP
100	000-207-010-064	3	WASHER, FLAT 6MM
110	067-000-100-204	1	SENSOR, LENGTH POT.W/O RESISTORS, CW ROTATION



**Hirschmann Automation and Control (MCS)**  
1540 ORCHARD DRIVE  
CHAMBERSBURG, PA 17201

**TRUE, QSCALE MAESTRO, BOOM UPGRADE  
(FROM EXISTING 200/208/209 REEL)**

GENERAL TOLERANCES		ECN:	102124
IN. DIM.	DEC. PLACES	MM DIM.	DRAWN
±0.1"	1	±2.5mm	RBM
±0.01"	2	±0.25mm	APPROVED
±0.005"	3	±0.13mm	JM
1/16"	FRACTION	±1.5mm	SCALE: NONE
			SHEET: 1 OF 1
			REV

102124

C.A.G.E. 79760