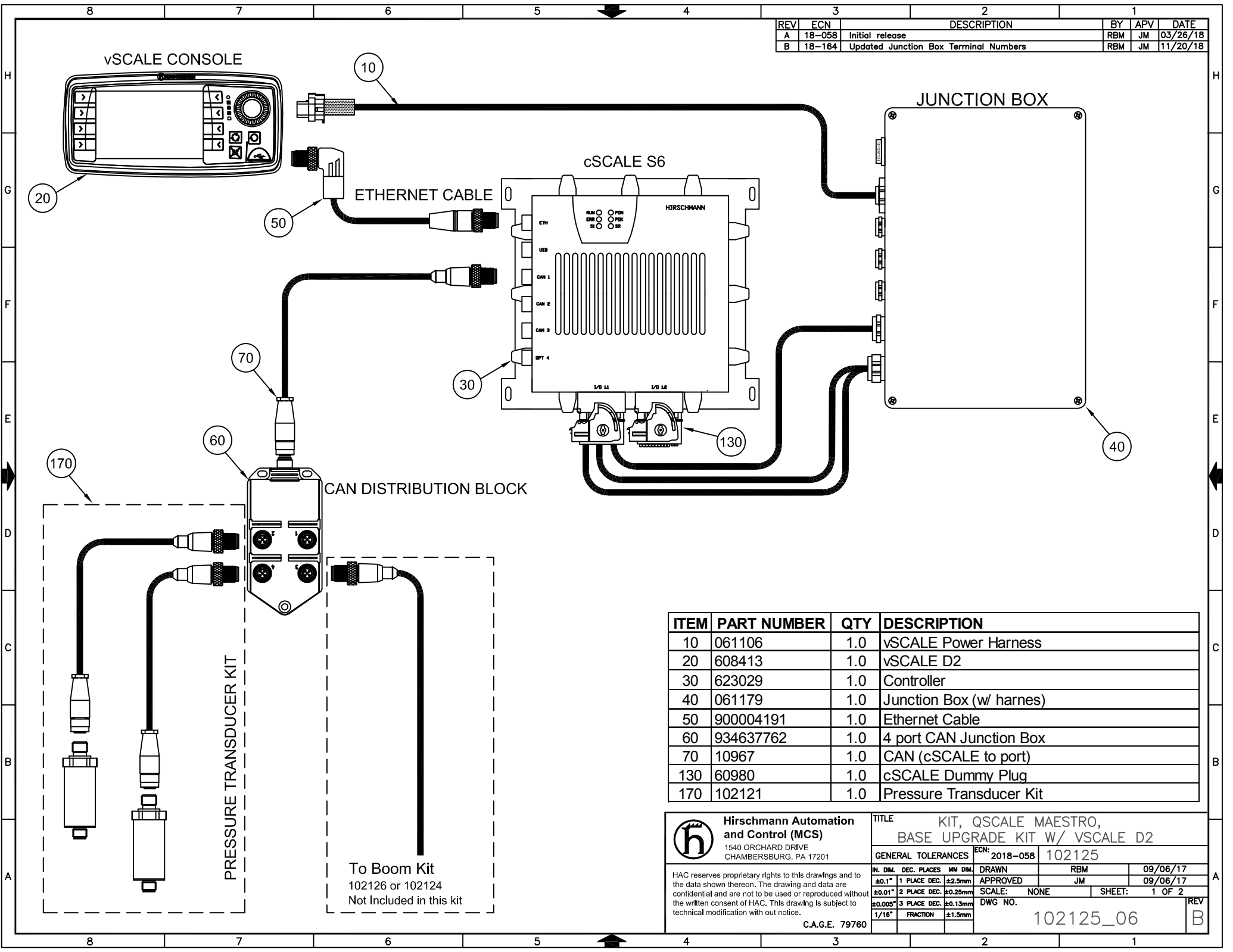


REV	ECN	DESCRIPTION	BY	APV	DATE
A	18-058	Initial release	RBM	JM	03/26/18
B	18-164	Updated Junction Box Terminal Numbers	RBM	JM	11/20/18



ITEM	PART NUMBER	QTY	DESCRIPTION
10	061106	1.0	vSCALE Power Harness
20	608413	1.0	vSCALE D2
30	623029	1.0	Controller
40	061179	1.0	Junction Box (w/ harness)
50	900004191	1.0	Ethernet Cable
60	934637762	1.0	4 port CAN Junction Box
70	10967	1.0	CAN (cSCALE to port)
130	60980	1.0	cSCALE Dummy Plug
170	102121	1.0	Pressure Transducer Kit

Hirschmann Automation and Control (MCS)
 1540 ORCHARD DRIVE
 CHAMBERSBURG, PA 17201

TITLE KIT, QSCALE MAESTRO, BASE UPGRADE KIT W/ VSCALE D2

GENERAL TOLERANCES ECN: 2018-058 102125

IN. DIM.	DEC. PLACES	MM DIM.	DRAWN	RBM	09/06/17
±0.1"	1 PLACE DEC.	±2.5mm	APPROVED	JM	09/06/17
±0.01"	2 PLACE DEC.	±0.25mm	SCALE: NONE	SHEET: 1 OF 2	
±0.005"	3 PLACE DEC.	±0.13mm	DWG NO.	REV	
1/16"	FRACTION	±1.5mm	102125_06	B	

C.A.G.E. 79760

REV	ECN	DESCRIPTION	BY	APV	DATE
A	18-058	Initial release	RBM	JM	03/26/18
B	18-164	Updated Junction Box Terminal Numbers	RBM	JM	11/20/18

FROM cSCALE TO JUNCTION BOX

Route cable W01 through Strain Relief 1
Route cable W02 through Strain Relief 2
Route cable W03 through Strain Relief 3

	To terminal #
1 L1 + UBP	(83)
2 L2 + UBS_SL1	(76)
3 K2 PWR_SW	(56)
4 L4 + UBP	(83)
5 M1 - UB	(63)
6 M4 - UB	(42)

ANALOG INPUTS

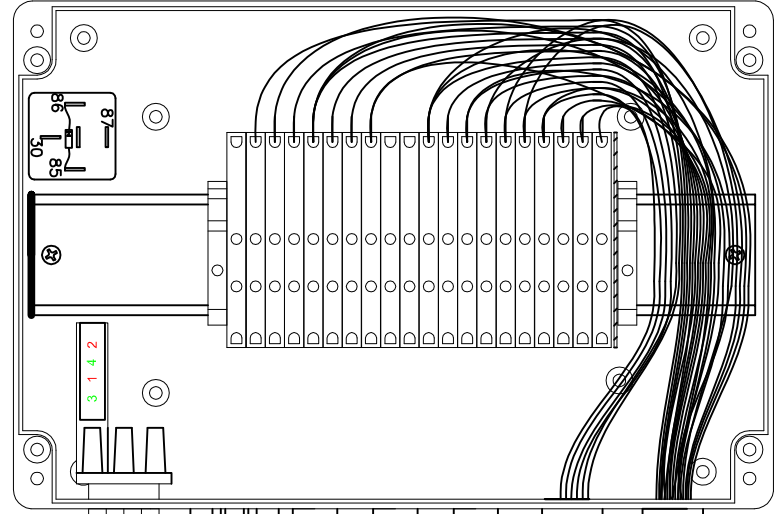
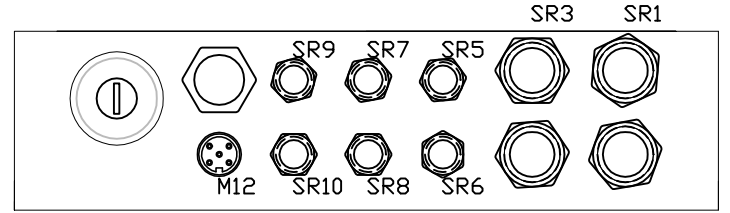
1 A3 CURRENT JIB LENGTH	(44)
2 B3 CURRENT JIB ANGLE	(45)
3 C3 CURRENT KMD1 INPUT	(64)
4 D3 CURRENT KMD2 INPUT	(65)

DIGITAL INPUTS

5 A2 DIGITAL INPUT 1	(52)
6 B2 DIGITAL INPUT 2	(53)
7 C2 DIGITAL INPUT 3	(54)
8 D2 DIGITAL INPUT 4	(55)
9 G2 OVERRIDE	(71)
10 H2 WIRED WINDSPEED	(70)
11 E4 DIGITAL INPUT 5	(72)
12 F4 DIGITAL INPUT 6	(73)
13 G4 DIGITAL INPUT 7	(74)
14 H4 DIGITAL INPUT 8	(75)

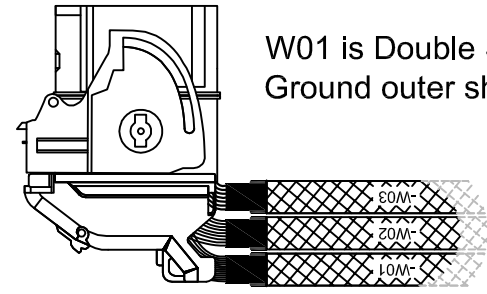
DIGITAL OUTPUTS

1 A1 FKO (high for okay)	(46)
2 B1 ALARM / RED LIGHT (high for alarm)	(47)
3 C1 WARNING / YELLOW LIGHT (high for warning)	(48)
4 D1 OKAY / GREEN LIGHT (high for green light)	(49)
5 E1 BASKET ACTIVE (high for basket attached)	(66)
6 F1 LENGTH LIMIT 1 (high for over limit)	(67)
7 G1 LENGTH LIMIT 2 (high for over limit)	(68)
8 H1 SELECT OP MODE (high for selecting OP mode)	(69)



Wire Cable Shields to Strain Relief Grounds

W01 is Double Shielded Ground outer shield.



Hirschmann Automation and Control (MCS) 1540 ORCHARD DRIVE CHAMBERSBURG, PA 17201	TITLE KIT, QSCALE MAESTRO, BASE UPGRADE KIT W/ VSCALE D2	
	GENERAL TOLERANCES	ECN: 2018-058 102125
	IN. DIM. ±0.1" 1 PLACE DEC. ±2.5mm ±0.01" 2 PLACE DEC. ±0.25mm ±0.005" 3 PLACE DEC. ±0.13mm 1/16" FRACTION ±1.5mm	DRAWN RBM 09/06/17 APPROVED JM 09/06/17 SCALE: NONE SHEET: 2 OF 2 DWG NO. 102125_06

HAC reserves proprietary rights to this drawings and to the data shown thereon. The drawing and data are confidential and are not to be used or reproduced without the written consent of HAC. This drawing is subject to technical modification without notice.

C.A.G.E. 79760