



PAT

**PAT**

# LOAD MOMENT INDICATOR

DS 350 / 1318 Graphic



## OPERATOR'S MANUAL



## NOTICE

**The information in this document is subject to change without notice.**

**PAT makes no warranty of any kind with regard to this material, including, but not limited to the implied warranties of merchantability and fitness for a particular purpose.**

**PAT shall not be liable for errors contained in this manual or for incidental or consequential damages in connection with the furnishing, performance, or use of this manual. This document contains proprietary information, which is protected by copyright. All rights are reserved.**

**No part of this document may be photocopied, reproduced, or translated to another language without the prior written consent of PAT.**



## TABLE OF CONTENTS

<b>1</b>	<b>GENERAL INFORMATION</b> .....	<b>1</b>
<b>2</b>	<b>WARNINGS</b> .....	<b>2</b>
<b>3</b>	<b>SYSTEM DESCRIPTION</b> .....	<b>3</b>
3.1	SYSTEM FUNCTION .....	5
3.2	OPERATING CONSOLE .....	6
3.3	CONTROL IDENTIFICATION .....	7
<b>4</b>	<b>CONFIGURATION SETUP</b> .....	<b>13</b>
4.1	LMI SETUP PROCEDURE .....	13
4.2	QUICK SETTING OF THE REEVING .....	18
4.3	QUICK HOIST LINE SELECTION .....	19
<b>5</b>	<b>OPERATION</b> .....	<b>21</b>
5.1	LIMIT SETTING .....	24
5.1.1	Slewing Angle Limitation / Work Area Definition .....	25
5.1.2	Tip Height Limitation .....	32
5.1.3	Boom Angle Limitation .....	33
5.1.4	Radius Limitation .....	36
5.2	INFO CRANE CONFIGURATION .....	39
5.3	DISPLAY CONTRAST CONTROL .....	40
<b>6</b>	<b>PRE-OPERATION INSPECTION AND CALIBRATION VERIFICATION</b> .....	<b>41</b>
<b>7</b>	<b>SERVICE AND MAINTENANCE</b> .....	<b>47</b>
<b>8</b>	<b>TROUBLESHOOTING</b> .....	<b>48</b>
<b>9</b>	<b>APPENDIX</b> .....	<b>52</b>
9.1	APPENDIX A: DETAILED SYMBOL EXPLANATION OF BOOM EXTENSIONS .....	52
9.2	APPENDIX B: DETAILED SYMBOL EXPLANATION OF COUNTERWEIGHT OPTIONS .....	53



## 1 GENERAL INFORMATION

The PAT Load Moment Indicator<sup>1</sup> (LMI) DS 350 has been designed to provide the crane operator with the essential information required to operate the machine within its design parameters.

Using different sensing devices, the Load Moment Indicator monitors various crane functions and provides the operator with a continuous reading of the crane's capacity. The readings continuously change as the crane moves through the motions needed to make the lift.

The LMI provides the operator with information regarding the length and angle of the boom, working radius, rated load and the total calculated weight being lifted by the crane.

If non permitted conditions are approached, the DS 350 Load Moment Indicator will warn the operator by sounding an audible alarm, lighting a warning light and locking out those functions that may aggravate the crane's condition.

---

<sup>1</sup> **LOAD MOMENT:** generally the product of a force and its moment arm; specifically, the product of the load and the load-radius. Used in the determination of the lifting capacity of a crane

## 2 WARNINGS

The LMI is an operational aid that warns a crane operator of approaching overload conditions and of over-hoist conditions that could cause damage to equipment and personnel.

The device is not, and shall not, be a substitute for good operator judgment, experience and use of accepted safe crane operating procedures.

The responsibility for safe crane operation remains with the crane operator who shall ensure that all warnings and instructions supplied are fully understood and observed.

Prior to operating the crane, the operator must carefully and thoroughly read and understand the information in this manual to ensure that he knows the operation and limitations of indicator and crane.

Proper functioning depends upon proper daily inspection and observance of the operating instructions set forth in this manual. Refer to Section 6. *Pre-Operation Inspection and Calibration Verification* of this manual.

**WARNING**

The LMI can only work correctly, if all adjustments have been properly set. For correct adjustment, the operator has to answer thoroughly and correctly all questions asked during the setup procedure in accordance with the real rigging state of the crane. To prevent material damage and serious or even fatal accidents, the correct adjustment of the LMI has to be ensured before starting the crane operation.



### 3 SYSTEM DESCRIPTION

The PAT Load Moment Indicator DS 350 consists of a central micro processor unit, operating console, length/angle sensor, pressure transducers, and anti-two block switches.

The system operates on the principle of reference/real comparison. The real value, resulting from the pressure measurement is compared to the reference data, stored in the central processor memory and evaluated in the micro processor. When limits are reached, an overload warning signal is generated at the operator's console. At the same time, the aggravating crane movements, such as hoist up, telescope out and boom down, will be stopped.

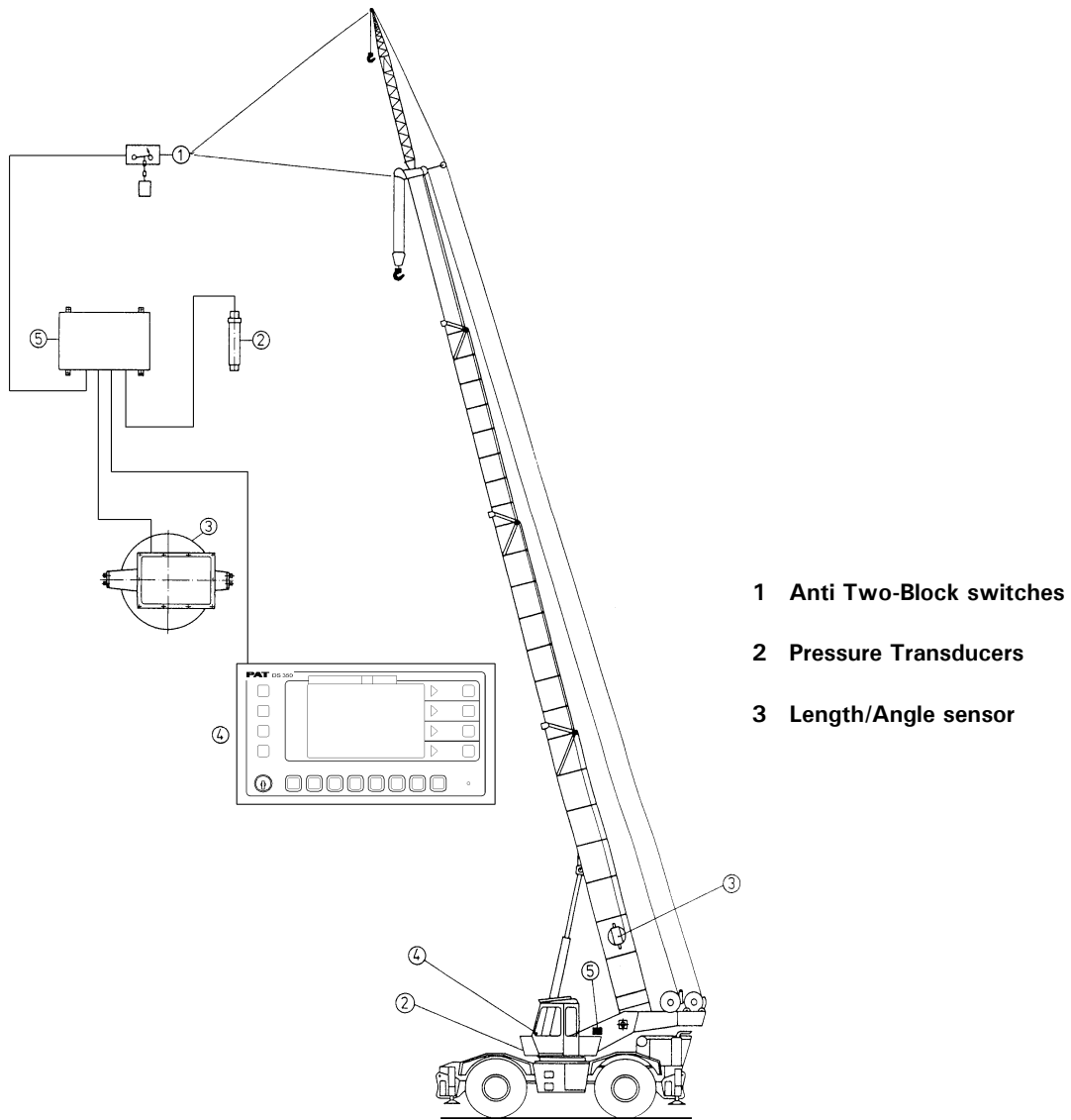
The fixed data regarding the crane, such as capacity charts, boom weights, centers of gravity and dimensions are stored in memory chips in the central processor unit. This data is the reference information used to calculate the operating conditions.

Boom length and boom angle are registered by the length/angle sensor, mounted inside the cable reel which is mounted on the boom. The boom length is measured by the cable reel cable which also serves as an electrical conductor for the anti two-block switches.

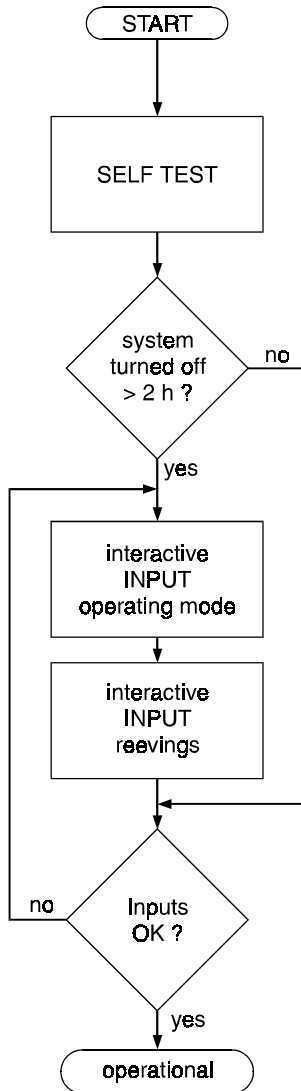
The crane load is measured by pressure transducers attached to the piston and rod side of the hoist cylinders.

The interactive user guidance considerably simplifies the input of operating modes as well as the setting of geometry limit values.

Fig. 1: *Components of the LMI system PAT DS 350*



### 3.1 System Function



Upon switching on, the system starts with an automatic test of the LMI system, of lamps and audible alarm. During the test, the LC display shows the initial logo.

If the system was turned off for more than two hours, the setup configuration has to be entered after the system test. (⇒ chapter 4)

First, the operating mode is determined by an interactive step-by-step interrogation of the rigging states.

Next is the interactive input of the reeving.

Now the LC display shows in symbols all inputs and awaits acknowledgment or canceling.

Upon acknowledgment of the inputs the system is ready for operation.

## 3.2 Operating Console

The console has 3 functions:

- Inputs by the crane operator (operating mode, reeving)
- Input of geometry limit values and signalization of exceeded limit values
- Display of important data and information

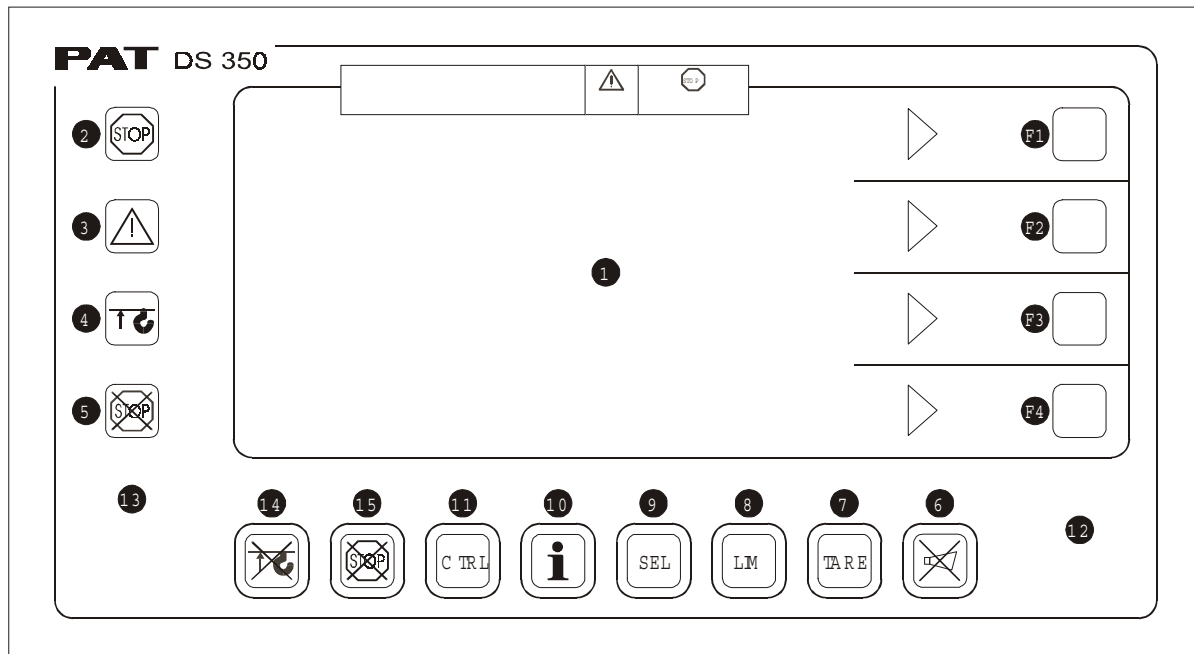
The operator's console is mounted in the crane's cab in the operator's field of vision. For a better identification of displays and operating elements, they are continuously backlit during operation.

### 3.3 Control Identification

This unit contains a display and different controls which are described as follows:

**Legend to Fig 2:**

1 LC Display Area	10 Button and Control Light "INFO"
2 Load Moment Limit Light	11 Button and Control Light "CONTROL"
3 Load Moment Prewarning Light	12 Audible Alarm
4 Alarm Light "Anti-Two-Block"	13 By-Pass Key Switch
5 Override Key Warning Light	14 Button and Control Light "By-Pass Anti-Two-Block"
6 Button "Alarm Stop"	15 Button and Control Light "By-Pass LMI shut-off function"
7 Button and Control Light "TARE"	F1 Button "Function 1"
8 Button and Control Light "LIMITS"	F2 Button "Function 2"
9 Button and Control Light "SELECT OPERATION MODE"	F3 Button "Function 3"
	F4 Button "Function 4"

Fig. 2: *Operating Console*

### 1 LC-Display



The LC display visualizes graphical symbols, texts and numerical values. Depending on the selected operating mode (setup, limit mode or LMI representation), the corresponding information is indicated on the display.



Please refer to the description of the different operating modes for the signification of the individual elements.

← 50.8ft →

## 2 Load Moment Limit Light



The red LOAD MOMENT LIMIT LIGHT (2) warns the operator that a rated load condition has been reached. It lights up when the load on the crane reaches the crane load capacity. The audible alarm also sounds when this condition has been reached.

The following crane movements will be stopped concurrently:

- hoist up
- telescope out
- boom down

## 3 Load Moment Prewarning Light



The yellow LOAD MOMENT PRE-WARNING LIGHT (3) will light up when the load on the crane reaches the defined prewarning area, thus indicating that an overload condition is approaching.

This means for the operator to continue his crane operation with extreme caution.

## 4 Alarm Light "Anti-2-Block"



The red "Anti Two-Block Alarm Light" (4) lights up when the anti-two-block limit switch contacts open, indicating that a two-blocking condition is approaching. At the same time the audible alarm will sound.

The following crane movements will be stopped subsequently:  
hoist up, telescope out, boom down.

## 5 Override Key Warning Light



The red OVERRIDE KEY WARNING LIGHT (5) flashes to indicate that the cut-off function of the A2B / LMI system is deactivated.

## 6 Button and Control Light "Alarm Stop"



This ALARM STOP BUTTON (6) allows the audible alarm to be silenced for approximately 15 seconds by pressing this button. Reference ⇒ "Audible Alarm" (12).

## 7 Button and Control Light "Tare"



The button "TARE" (7) is used to indicate the "Net load" on the LC Display (1). Net load is the present load, less lifting tackle and hook block. The Tare Button (7) has to be activated *before* lifting.

After pushing the "Tare Button" (7) the load display is set to zero (taring) and the control light lights up. After lifting a load the display shows the *net load* (pay load).

The *net load* display will change to the actual load display when the boom radius is changed (either by angle or length).

## 8 Button "LIMITS"



Button to start the function "program limit values"

For the procedure, please refer to ⇒ chapter 5.1.

## 9 Button "SELECT"



Button to start the function "set operating mode"

For the procedure please refer to ⇒ chapter 4.1.



The correct setting is of utmost importance for the proper function of the system and the crane. Therefore only operators who are thoroughly familiar with use and operation of the system shall set this button.



### 10 Button "INFO"



Button to start the function "information crane configuration"

Please refer to ⇒ chapter 5.2.

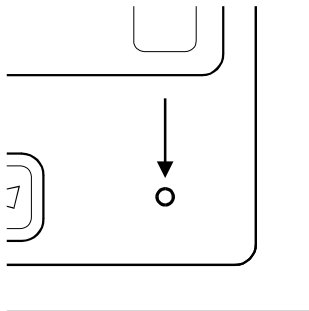
### 11 Button "CONTROL"



Button to start additional functions

Please refer to ⇒ chapter 5.3.

### 12 Audible Alarm

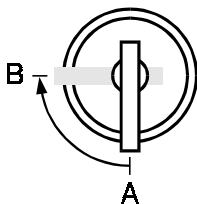


The AUDIBLE ALARM (12), sounds during the following conditions:

- overload condition
- approaching two-block condition
- preset limits reached
- malfunction of the LMI system
- operating error

The alarm can be temporarily silenced by pushing the button "Alarm Stop" (6).

### 13 Key Switch



- The anti-two-block switch cut-off function is deactivated when the KEY SWITCH (13) is turned to position "B" and the "By-pass A2B" button (14) is pushed.

or

- The LMI cut-off function is deactivated when the KEY SWITCH (13) is turned to position "B" and the "By-pass LMI" button (15) is pushed.

KEY SWITCH (13) can be operated only by using the matching key.


**WARNING**

Since button (14) and (15) deactivate the cut-off function of the LMI system / the anti two-block system, the following instructions must be obeyed:

- The by-pass function shall be used with discretion, as unwarranted use of it to override the control lever lockout system can result in harm to the crane and danger to property and persons.
- Never use the by-pass function to either overload or operate the crane in a non-permissible range.

**14** Button "By-pass A2B"


This button can be operated only if key switch (13) is turned to position B.

After pushing this button, the cut-off function of the anti-two-block switch is deactivated.

The Override Key Warning Light (5) flashes to indicate that the cut-off function is deactivated.

**15** Button "By-pass LMI"


This button can be operated only if key switch (13) is turned to position B.

After pushing this button, the control lever lockout function of the LMI is deactivated.

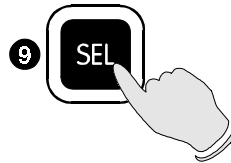
The Override Key Warning Light (5) flashes to indicate that the cut-off function is deactivated.

## 4 CONFIGURATION SETUP

The LMI setup procedure allows the operator to input the crane configuration using interactive displays. The operator must complete the setup procedure for the Load Moment Indicator system if the system has been turned off for more than two hours or the crane operation configuration has been changed.

### 4.1 LMI Setup Procedure

- ...starts:
- *Automatically*, if the system was turned off for more than two hours.
  - *Manually* at each modification of the crane configuration by pressing key (9) "SEL"



- ...is operated:
- By answering the different questions using functional keys F1...F4 in accordance with the actual configuration of the crane.
- ...is cancelled:
- Any time by pressing again key (9) "SEL". The system, however, is only ready for operation, if the procedure has been completed and the inputs have been confirmed.

If the system is turned off, for example during short breaks (less than 2 hours), all adjustments remain stored. When turning on again the system these adjustments can be acknowledged by merely pressing one key (provided that the crane configuration has not been modified!).

During the programming procedure, the Load Moment Prewarning Light (3) and the Load Moment Limit Light (2) will light up and the aggravating crane movements will be interrupted.

**Note:** *If a configuration is selected which is not available, the display will indicate error code E04. In this case, the procedure has to be repeated with valid values!*



The correct setting is of utmost importance for the proper functioning of the system and the crane. Therefore, only operators who are thoroughly familiar with the crane and the operation of the system should execute the setting of the system according the operating configuration of the crane.

The LMI programming procedure consists of the following steps:

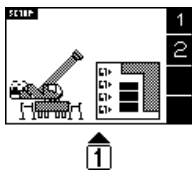
- Setting the boom configuration
- Setting the counterweight configuration (where applicable)
- Setting the hoist configuration
- Setting the outrigger configuration
- Setting the reevings
- Confirmation of the programming procedure

For easy operation, the computer guides the operator through the procedure step by step. (interactive operation).

#### Definition of the Displayed Symbols:

The following illustrations define the symbols appearing on the display during the setup procedure. Not all symbols will be shown, depending on the crane type and the answers to the questions.

- **Select interactive configuration setup / special mode setup**



interactive configuration setup



special mode setup

**Note:** Refer to manufacturer's load chart for special LMI operating code.

- (if selected special mode setup only)



Increase selected numeral



Decrease selected numeral

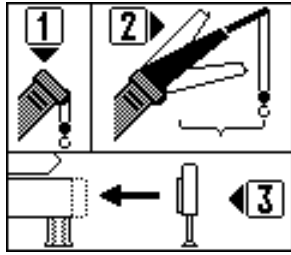


Select next numeral



Confirm selected operating code

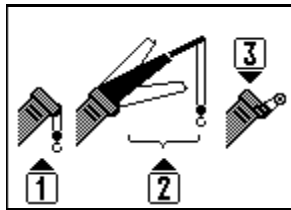
• **Setting the boom configuration**



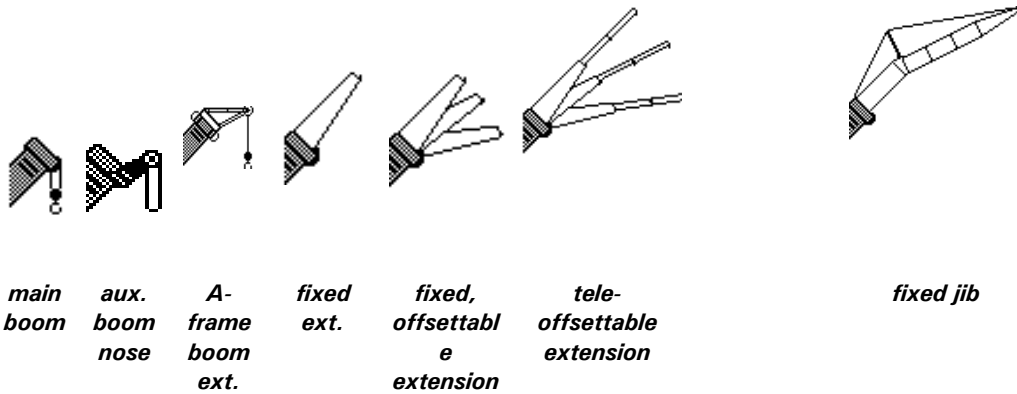
- 1** Main boom / aux. Boom nose operation
- 2** Operation with boom extensions
- 3** Rigging mode operation\*

\* for cranes with rigging mode for outrigger box installation only

or



- 1** Main boom
- 2** Operation with boom extensions
- 3** Aux. boom nose operation

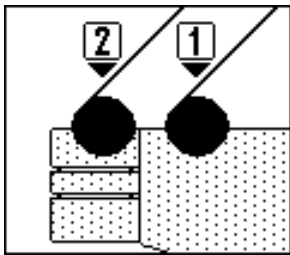


For detailed symbol explanation of extensions, please refer to Appendix A in this manual.

- **Setting the counterweight configuration**

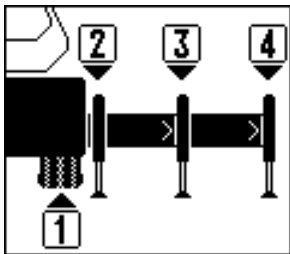
If your crane is equipped with counterweight options, please refer to Appendix B in this manual for detailed symbol explanation of counterweight.

- **Setting the hoist configuration**



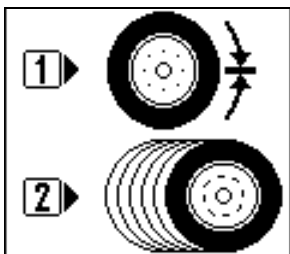
- 1** Front Hoist
- 2** Rear Hoist

- **Setting the outrigger configuration**



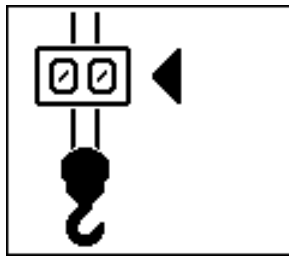
- 1** On rubber
- 2** Outrigger position 0%
- 3** Outrigger position 50%
- 4** Outrigger position 100%

- (if selected on rubber mode only)



- 1** Static
- 2** Pick & carry

- **Setting the reeving (parts of line)**



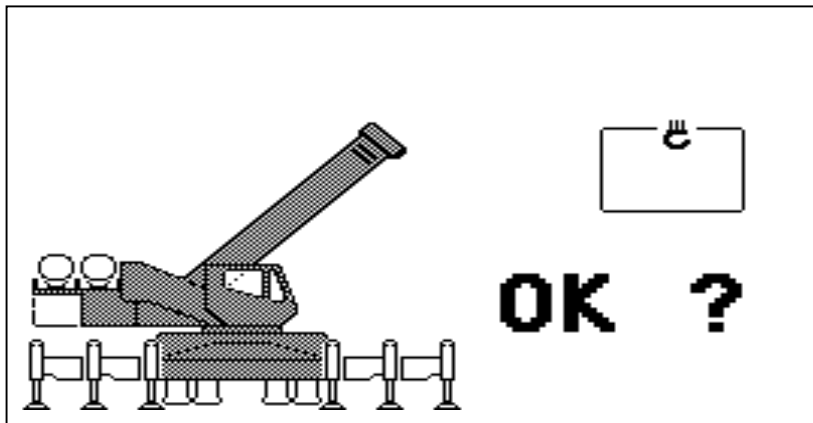
**+** Increase reeving

**-** Decrease reeving


**OK** Confirm reeving

- **Confirmation of the programming procedure**


**SETUP**



At the end of the procedure all inputs are represented once again in symbolic forms. If inputs have been made, the corresponding symbols are filled black.

 quick setting the reeving  
(⇒ chapter 4.3)

**DEL** cancel procedure

 quick hoist line selection  
(⇒ chapter 4.2)

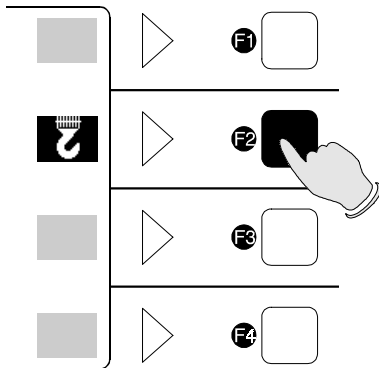
**OK** confirm inputs

## 4.2 Quick Setting of the Reeving

If, during the crane operation, the number of reevings is modified, the LMI system has to be adjusted to this modification. The input of the reeving can be carried out directly without having to go through the whole LMI programming procedure again:



Call LMI Programming Procedure.

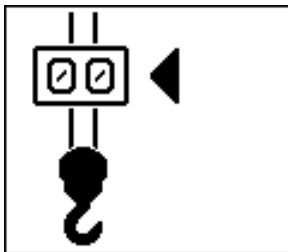


Directly call function "Quick Setting of the Reevings".

**Note:**

*The direct call is impossible, if the system has been turned off for more than 2 hours.*

Input of reeving:



**+** Increase reeving

**-** Decrease reeving

**OK** Confirm reeving

Confirm Modification.

(Select again the function upon faulty input)

**Note:** *If a configuration is selected which is not available on the present crane, the system will not accept the selection and the display will indicate the error code E04.*

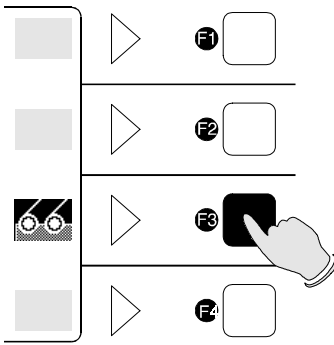


### 4.3 Quick Hoist Line Selection

If, during the crane operation, the crane is switched over from front to rear hoist, the LMI system has to be adjusted to this modification. This modification can be entered without having to go through the whole LMI setup procedure again:



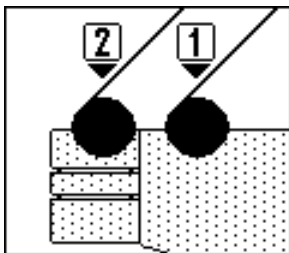
Call LMI setup procedure.



Directly call function "Hoist Line Selection".

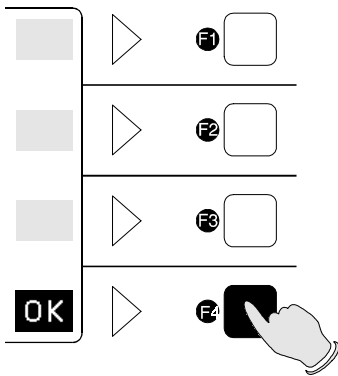
**Note:**

*The direct call is not possible, if the system has been turned off for more than 2 hours.*



Select hoist:

- 1** Front Hoist
- 2** Rear Hoist



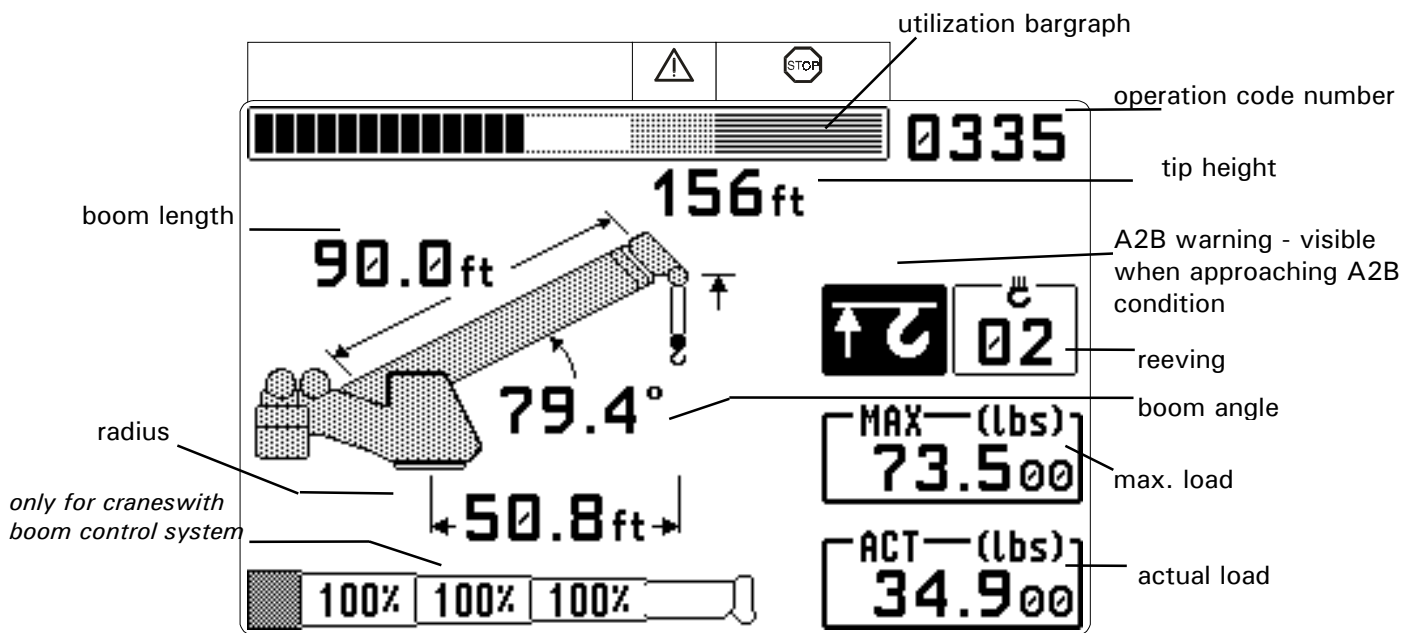
Confirm modification.

(Call up the function again if you have selected the wrong winch by mistake)

*Note: If a configuration is selected which is not available on the crane, the system will not accept the selection and the display will indicate the error code E04.*

# 5 OPERATION

After having set the LMI to the actual crane configuration, the system is ready for operation. The display shows the LMI screen (example for value representation).



Upon request, further symbols can be shown on the display:

	<p><b>Symbol Anti Two-Block Alarm:</b></p> <ul style="list-style-type: none"> <li>• visible when the anti-two-block limit switch contacts open, indicating that a two-blocking condition is approaching.</li> </ul>
	<p><b>Symbol slewing angle limitation:</b></p> <ul style="list-style-type: none"> <li>• continuously visible: <i>slewing angle limitation active</i></li> <li>• blinking: <i>slewing angle limits exceeded</i> (⇒ see chapter 5.1.1.a)</li> </ul>
	<p><b>Symbol work area definition:</b></p> <ul style="list-style-type: none"> <li>• continuously visible: <i>work area definition active</i></li> <li>• blinking: <i>work area limits exceeded</i> (⇒ see chapter 5.1.1.b)</li> </ul>
	<p><b>Symbol height limitation:</b></p> <ul style="list-style-type: none"> <li>• continuously visible: <i>height limitation active</i></li> <li>• blinking: <i>height limit exceeded</i> (⇒ see chapter 5.1.2)</li> </ul>
	<p><b>Symbol boom angle limitation:</b></p> <ul style="list-style-type: none"> <li>• continuously visible: <i>boom angle limitation active</i></li> <li>• blinking: <i>angle limit exceeded</i> (⇒ see chapter 5.1.3)</li> </ul>

**Symbol radius limitation:**

- continuously visible:  
*radius limitation active*
- blinking:  
*range limits exceeded*  
(⇒ see chapter 5.1.4)

**E####****Error code No. ####**

(⇒ see chapter 8 "Troubleshooting")

## 5.1 LIMIT Setting

The LMI system has been equipped with programmable limits for the crane's operation range.

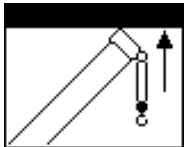
- Easy programming due to interactive, step-by-step user guidance
- Functions can be used individually or in combinations.
- Exceeding a programmed limit triggers an audible and visual alarm.
- Depending on the crane type not all functions listed below are available.

### Overview limits:



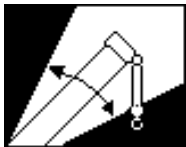
#### **Slewing Angle Limitation / Work Area Definition**

(⇒ chapter 5.1.1)



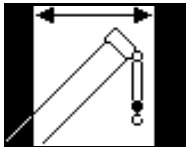
#### **Tip Height Limitation**

(⇒ chapter 5.1.2)



#### **Boom Angle Limitation**

(⇒ chapter 5.1.3)



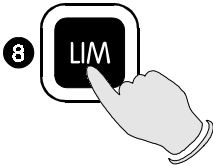
#### **Radius Limitation**

(⇒ chapter 5.1.4)

### 5.1.1 Slewing Angle Limitation / Work Area Definition

Programmable function for the limitation of the left and/or right slewing angle or working area definition.

➡ Call function:



Call LIMIT Setting.

Enter the corresponding figure to call the function:



**1** Slewing angle limitation

(maximum/minimum  
slewing angle)

(⇒ *chapter 5.1.1.A*)



**2** Work Area Definition

(Virtual wall setup. A wall is  
defined by a straight line between  
two set points.)

(⇒ *chapter 5.1.1.B*)

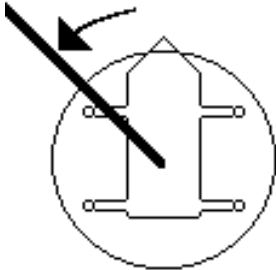
### 5.1.1.A Slewing Angle Limitation

- set / delete left slewing angle:

Select limit:



Select left limit




set:	delete:
Position boom to required left limit value.	<b>DEL</b> delete left angle limit
<b>SET</b> program present slewing angle as left limit	

**OK** quit function



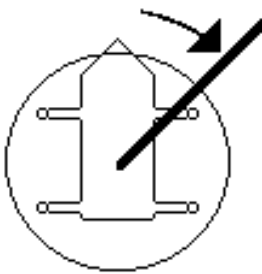
- Set / delete right slewing angle:

Select limit:

 Select right limit


**Set:**

**Delete:**



Position boom to the required right limit value.


 Delete right angle limit

 set present slewing angle as right limit



Display shows symbols and angle values of the programmed slewing angle limit

Display shows symbols without angle values

 Quit function

### 5.1.1.B Work Area Definition

The *work area definition system* helps the operator to define the crane's working area. This is done by creating vertical wall(s) that can represent obstacles (i.e. buildings, towers, poles, etc.) in the crane's working range. The wall(s) are set by defining points with the boom tip along the outer limits of the operator's work area, see setup procedure below. Because these walls are defined by the operator and are not "actual real" walls, we refer to them as "*virtual*" walls.

**When setting the walls, always keep a safe working distance to any obstacles. Never work outside a safe working area as outlined by common practice, standards, and manuals.**

A *virtual wall* is set by defining two points. To prevent inaccuracies when defining the two points for the virtual wall, use the following two rules:

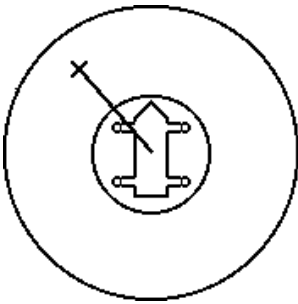
1. The two points should be the same distance from the obstacle.
2. Set the two points at the maximum distance apart, which can be safely reached by the boom tip.

The operator can set up to 5 virtual walls, the first wall is defined by a straight line between two set points. The second through fifth wall is created by one new point and the previously selected point. After the walls have been set, the system alerts the operator when the boom approaches them. This is done both visual and audible. The console will warn the operator by an audible, beeping alarm which increases in frequency as the boom approaches the wall. At the same times, the control light "*Alarm Stop*" (refer to no. 6, chapter 3.3 of the operator's manual) will come on and the button "*LIM*" (refer to no. 8, chapter 3.3 of the operator's manual) will be lit. Similarly, the "*virtual wall*" symbol in the main screen blinks. If the boom crosses the wall the audible alarm becomes continuous. See the Pre-warning System Section for information on how the pre-warning system is defined.



THERE ARE NO CUTOUTS ASSOCIATED WITH THE WORK AREA DEFINITION FEATURE.

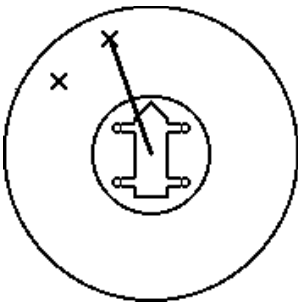
- Set / delete work area:



On entering the work area definition function, the crane working area is displayed. A blinking X indicates that a point may be set to define a wall. Move the boom tip to one end of the virtual wall you want to set.

**SET** Sets a point in the working area to start a wall

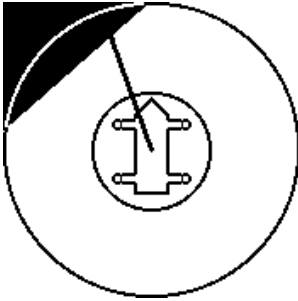
**DEL** Exits the screen



Having pressed SET, the X is displayed (without blinking) at this point. A blinking X at the boom tip indicates that the second point may be set to define the wall. Move the boom tip to other end of the virtual wall you want to set.

**SET** Sets the second point to create a wall

**DEL** Exits the screen and deletes all virtual wall settings

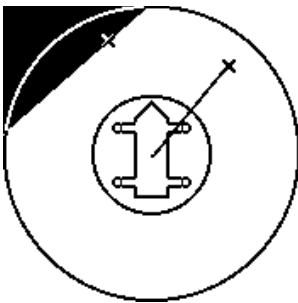


After pressing SET, an infinite virtual wall is defined. Now, three soft keys are available:

**OK** Accepts the defined wall and exits

**SET** Allows for further walls to be added

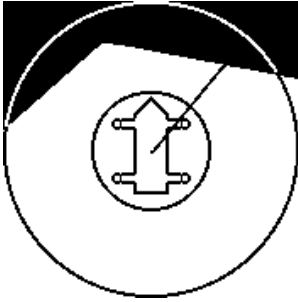
**DEL** Exits the screen and deletes all virtual wall settings



After pressing SET, an X appears where the last point had been set, and a new wall may thus be added. Move the boom tip to the other end of the additional virtual wall you want to set.

**SET** Sets the third point to create a second wall

**DEL** Exits the screen and deletes all virtual wall settings



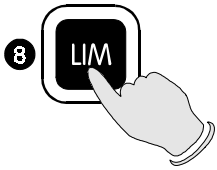
Upon pressing SET, the second wall is created.

- OK** Accepts the defined walls and exits
- SET** Allows for further walls to be added
- DEL** Exits the screen and deletes all virtual wall settings

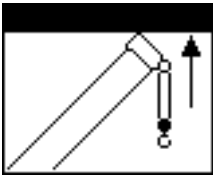
### 5.1.2 Tip Height Limitation

Programmable function for the limitation of the tip height

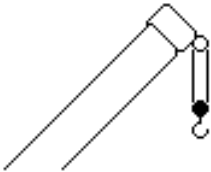
- Set tip height / delete height limitation:



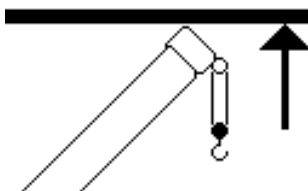
Call LIMIT Setting.

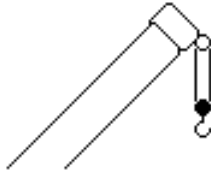
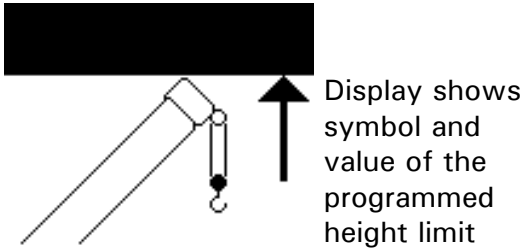


Press the corresponding figure to select function "tip height limitation".



Press key

set:	delete:
 <p>Move the tip to the required upper limit.</p> <p><b>SET</b> set present tip height as upper limit</p>	<p><b>DEL</b> delete tip height limitation</p>



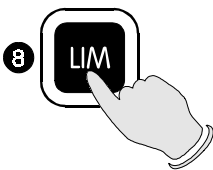
Display shows symbol without values

**OK** quit function

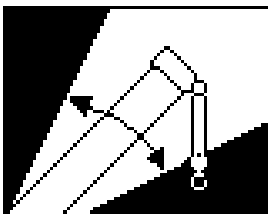
### 5.1.3 Boom Angle Limitation

Programmable function for the limitation of the upper and/or lower boom angle.

- Call function:

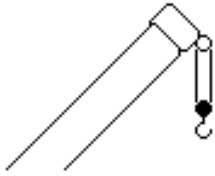


Call LIMIT Setting.



Enter the corresponding figure to call function "boom angle limitation".

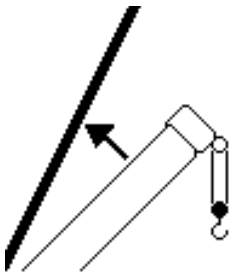
- Set / delete upper limit value:



Select limit:



selection upper boom angle limit



**set:**

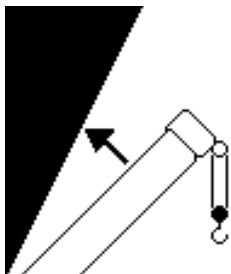
Luff up the boom the requested limit value.

**delete:**

**DEL** delete upper angle limit



set present boom angle as upper limit



Display shows symbol with value of the upper angle limit

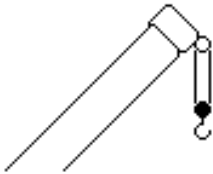
Display shows symbol without value of the upper angle limit



quit function



- Set / delete lower limit angle



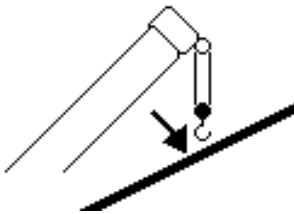
Select limit:



selection lower boom angle limit

**set:**

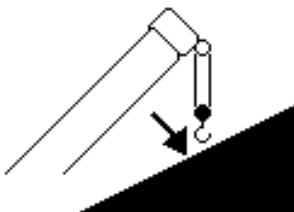
**delete:**



Luff down boom to the required limit value.

**DEL** delete lower angle limit

**SET** set present boom angle as lower limit



Display shows symbol with lower angle limit

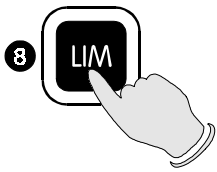
Display shows symbol without value of lower limit angle

**OK** quit function

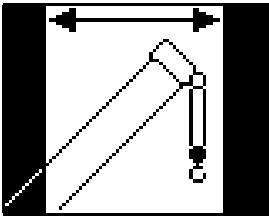
### 5.1.4 Radius Limitation

Programmable function for the limitation of the minimum and/or maximum working radius.

- Call function:

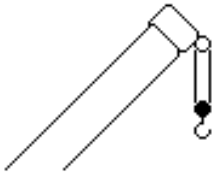


Call LIMIT Setting



Select the corresponding figure to call the function "radius limitation".

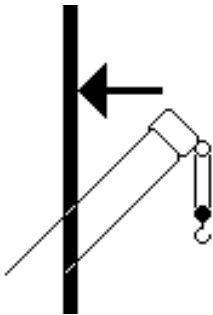
- Set / delete minimum radius:



Select limits:



select minimum radius limit



**set:**

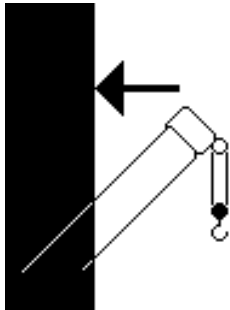
Position boom at the required minimum radius value.

**delete:**

**DEL** Delete minimum radius limit



Set present boom radius as minimum radius



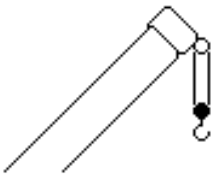
Display shows symbol with radius value of minimum limit

Display shows symbol without value of minimum radius



quit function

- Set / delete maximum radius



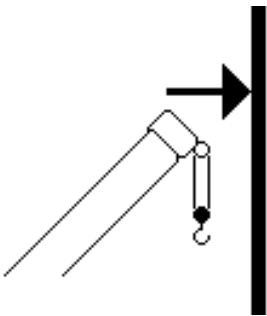
Select limit:



Selection maximum radius limit

**set:**

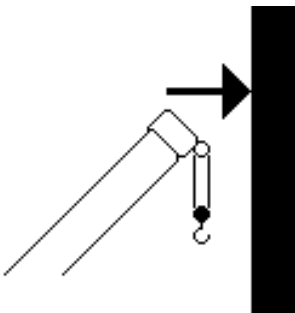
**delete:**



Position boom to the required maximum radius value.

**DEL** Delete maximum radius limit

**SET** Set present boom radius as maximum radius



Display shows symbol with radius value of max. limit

display shows symbol without value of max. radius

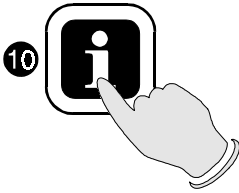


quit function

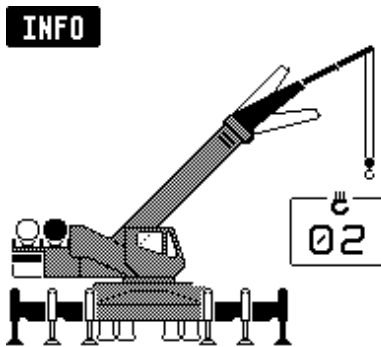
## 5.2 INFO crane configuration

With the system being ready for operation, this function serves to display the system configuration.

- Call function

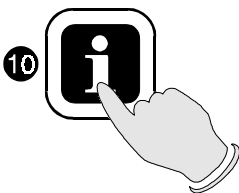


Press key "INFO".



The display shows the crane symbol representing the adjusted configuration (marked black), the extended operating code number and the reeving number (parts of line).

- End function

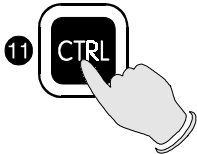


Press again key "INFO".

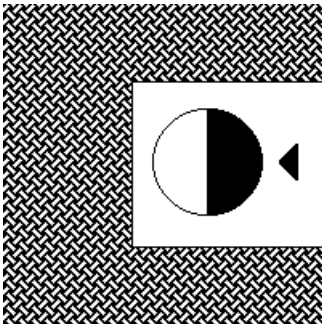
### 5.3 DISPLAY Contrast Control

This function serves for the contrast adjustment of the LC display. The last adjustment is stored and does not have to be repeated at every system start.

- Contrast adjustment



Press "CTRL".



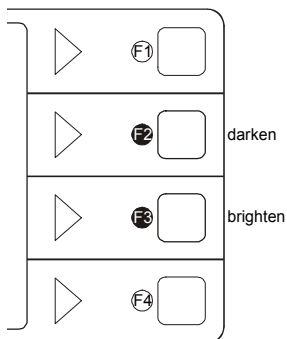
A pattern is shown by means of which the display can be adjusted to the optimum contrast. Use the functional keys to modify the contrast upon request:

**+** darken display

**-** brighten display

**OK** confirm setting

Press key "OK" to store the momentarily adjusted contrast value and to quit the function.



During normal LMI operation the display contrast can be adjusted too by pressing button:

F2 (darken display) or

F3 (brighten display).

## 6 Pre-Operation Inspection and Calibration Verification

Before operating the crane, the following electrical connections must be checked to ensure that the system is properly connected for the crane configuration.

### Machines with only a Main Hoist

If the crane works only with the boom and without boom extension, no additional connections are necessary. However, be sure the weight of the anti two-block switch is properly installed on the main hoist load line. With even parts of hoisting line, the weight must be attached to the dead-end line. With odd parts of hoisting line, the weight must be attached to the line of lowest speed.

If the crane works with boom extension, the connecting cable must be installed between the junction box on the boom extension and the boom junction box. The weight attached to the main hoist anti two-block switch shall be removed. In that case the anti two-block switch has to be locked with the red Anti Two-Block Retainer, which is fixed with a red lanyard at the anti two-block switch (described on pages 40 and 41). Then the weight must be re-attached to the boom extension anti two-block switch.



Failure to re-position the anti two-block switch weight will prevent the over-hoist system from functioning properly. No weight shall be on the main hoist anti two-block switch when the boom extension is being used.

### Machines with Main and Auxiliary Hoists

If the boom extension is not in the operating position, the by-pass plug must be installed in the main boom junction box. The weight of the main hoist anti two-block switch must be installed.

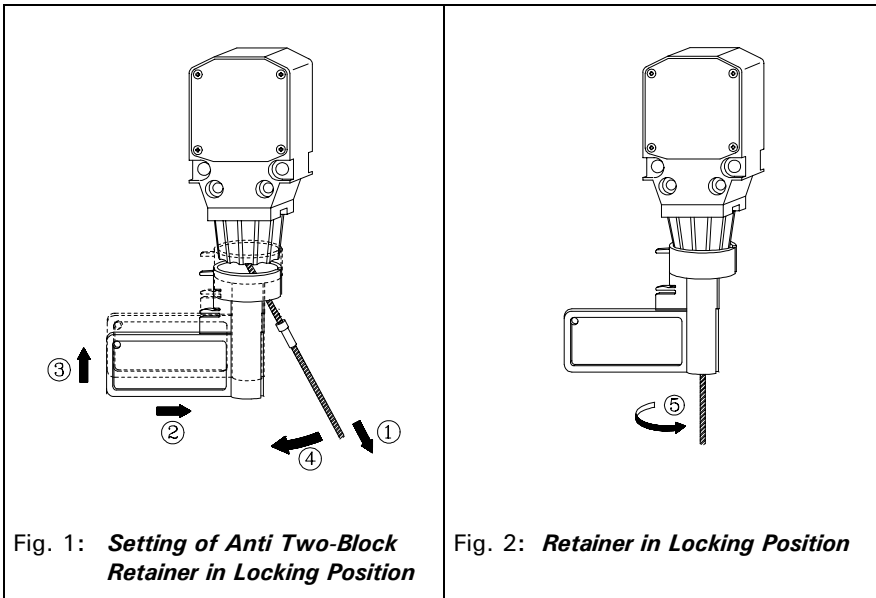
If the boom extension is in the operating position, the connecting cable must be installed between the junction boxes on the boom extension and the main boom. Weights shall also be attached to the anti two-block switches on both the main boom and boom extension.

If the boom extension is in the operating position and no load line is being used on the main boom, to prevent injury or damage to equipment, the weight shall be removed from main boom switch. In that case, the anti two-block switch has to be locked with the red Anti Two-Block Retainer, which is fixed with a red lanyard (not shown) at the anti two-block switch.

## Installation of Anti-Two-Block Retainer in Locking Position

Procedure (see Fig. 1 and 2):

1. Pull the cable out of the switch and bend back parallel to the boom and hold (1).
2. Slide the retainer from left side with its slot over the cable between the crimped stop and the switch (2). Push it firmly straight onto the cable guide of the Anti Two-Block switch (3).



3. Straighten the cable completely into the slot and release the cable (4).

4. Turn the flag of the retainer for best visibility for the operator (5).



### Removal and Storage of the Anti-Two-Block Retainer

Procedure (see Fig. 3 and 4):

1. Pull the cable out of the switch (1) and bend back parallel to the boom and hold (2).
2. Move the retainer down (3) and then left (4) to remove it from the Anti Two-Block switch. Release the cable.

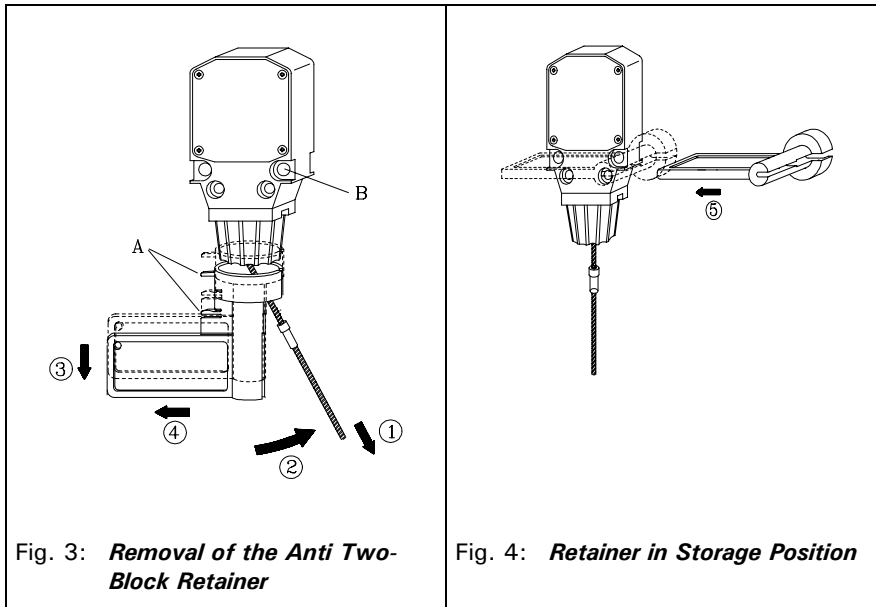


Fig. 3: **Removal of the Anti Two-Block Retainer**

Fig. 4: **Retainer in Storage Position**

3. For storage slide the retainer from right side (5) over the Anti Two-Block switch until the clips (A) lock into the holes (B).

## Pre-Operation Inspection and Calibration Verification

After the electrical connections have been checked to ensure that the system is properly connected for the crane configuration, the following checks shall be made:

1. Check the electrical wiring connecting the various parts of the system for physical damage.
2. Check the anti two-block switches and weights for free movement.
3. Check the spring-loaded cable reel to be sure it is free to rotate, has tension and the cable is reeled properly.



The following tests shall be performed with care to prevent damage to the machine or injury to personnel. Proper functioning of the system requires successful completion of these tests before operating the machine.

If the operator cannot see the load handling device approaching the boom nose, he shall have an assistant (signal person) watch the load handling device. The operator shall be prepared to stop the machine immediately should the LMI system not function properly as indicated by lighting the red warning light (4), sounding the audible alarm (12) and locking the crane movements, hoist up, telescope out and boom down.

1. Check the anti two-block alarm light (4) and the audible alarm (12) by performing one of the following tests:
  - a) By manually lifting the weight attached to the anti two-block switches. When the weight is lifted, the audible alarm (12) should sound, the anti two-block alarm light (4) should light.
  - b) Slowly raise the main boom load handling device to create a potential two-block condition. When the load handling device lifts the weight, the audible alarm (12) should sound, the anti two-block alarm light (4) should light and the motion of the load handling device should be stopped. Lower the load handling device slightly to eliminate this condition.
  - c) Slowly lower the boom to create a potential two-block condition. When the load handling device lifts the weight, the audible alarm (17) should sound, the anti two-block alarm light (24) should light and the boom lowering function should be stopped. Lower the load handling device slightly to eliminate this condition.

- d) Slowly extend (telescope) the boom to create a potential two-block condition. When the load handling device lifts the weight, the audible alarm (17) should sound, the anti two-block alarm light (24) should light and the boom telescope out function should be stopped. Lower the load handling device slightly to eliminate this condition.



If the light and audible alarm do not function as described and the crane movements are not stopped, the system is not working properly. The malfunction shall be corrected before operating the crane.

1. If the crane is equipped with a boom extension, repeat the test procedure for the boom extension anti two-block switch. Check that the display of the main boom length agrees with the actual boom length.
2. Check that the display of the main boom angle agrees with the actual boom angles.
3. Check that the display of the operating radius of the crane agrees with the actual radius.
4. Check the load display by lifting a load of known weight.
5. Operation

Upon correct inspection the LMI is operational. The operator shall be thoroughly familiar with all controls of the LMI before operating the crane. The proper function of the system shall be checked by lifting a load of known weight and comparing the load to the information displayed on the LMI.

Rated loads include the weight of the hook block, slings, and auxiliary load handling devices. Their combined weights shall be subtracted from the listed load capacities as stated on the load capacity chart to obtain the net load to be lifted.

 **WARNING**

If any of the displays reflects a deviation between displayed and actual values, an authorized PAT service representative shall be called for repair of the system or re-verification of the crane's LMI calibration.

 **WARNING**

Any structural modifications or changes to the crane shall require re-verification of the crane's LMI calibration.

## 7 SERVICE AND MAINTENANCE

Daily maintenance of the load moment indicator consists of inspecting:

1. The electrical wiring connecting the various parts of the system.  
If electrical wiring is damaged, it shall be replaced immediately.
2. If the insulation is worn on the length sensor cable or cable guides are damaged, these parts shall be replaced.
3. Check the anti two-block limit switches for freedom of movement.
4. The cable reel shall be under tension to operate properly.
5. Check the pressure transducers at the hoist cylinder(s) and the connecting hoses for oil leakage.

Other than correcting the problems identified in the Malfunctions Table and replacing faulty mechanical parts and cables, no other repairs shall be performed by non expert personnel.

## 8 TROUBLESHOOTING

### General

In case of a malfunction of the system, the display (1) will indicate a code that identifies the system malfunction.

The error codes listed in the Malfunction Table will identify various faults that can occur with the LMI. Following the Malfunction Table are pages which explain each fault and describe the action which shall be taken to correct the fault.

Faults within the electronic microprocessor shall be repaired by factory trained service personnel. When these faults occur, the competent service organization shall be contacted.

### Malfunction Table

Error Code	Error
E01	Fallen below the radius or above angle range
E02	Radius range exceeded or fallen below angle range
E03	Boom position is out of the permissible working area
E04	Operating mode not existing
E05	Prohibited length range
E18	Front outrigger overloaded
E83	Center Mid not fully extended
flashing %	Telescope out of permissible sequence

### NOTE:

*If there is any Error Code displayed on the console which is not listed in the Malfunctions Table you shall call the Local Distributor.*



## Operating Errors

Malfunctions in the system which are caused by range exceeding or operating errors by the crane operator himself are indicated on the display together with an explanation. These error codes are E01, E02, E03, E04, E05, E18 and E83 and they can normally be eliminated by the crane operator himself.

<b>Error Code</b>	<b>Cause</b>	<b>Elimination</b>
E01	Fallen below the minimum radius or above the angle given in the load capacity chart due to luffing up the boom too far.	Luff down boom to a radius or angle given in the load capacity chart.
E02	The maximum radius or minimum angle given in the load capacity chart was exceeded due to luffing down the boom too far.	Luff up boom to a radius or angle given in the load capacity chart.
E03	Boom position is out of the permissible working area (over front).	Move boom back to the permissible working area. See lifting diagram in the load capacity charts.
E04	Operating mode switch in the console incorrectly set.	Correctly set operating mode switch to the code assigned to the operating mode of the crane.
	Operating mode is not permissible with the actual crane configuration, boom position or area definition.	Be sure crane is set up according to proper operating configurations.
E05	Boom was telescoped too far or not far enough, you may only operate up to a certain maximum or minimum boom length or with load curves for boom extension where you have to telescope the main boom to a certain length.	Telescope boom to correct length, given in the load capacity chart.
	Length sensor adjustment changed i.e. length sensor cable slid off the length sensor drum.	For elimination refer to service manual.



<b>Error Code</b>	<b>Cause</b>	<b>Elimination</b>
E18	Front outrigger overloaded	Refer to load capacity charts.
E83	The Center Mid is not on its fully extended position while the OM/Fly is not completely retracted.	Extend the Center Mid Retract the OM/Fly Check the OM/Fly switch (dig. input 4)
flashing tele %	Telescope is out of the permissible sequence.	Fully retract telescope

## 9 APPENDIX

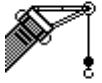
### 9.1 Appendix A: Detailed symbol explanation of boom extensions



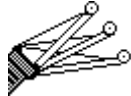
*main boom*



*auxiliary boom nose*



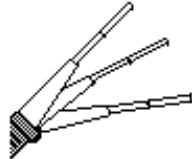
*A-frame boom extension*



*offsettable A-frame*



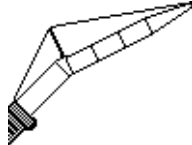
*fixed extension*



*tele-offsettable extension*



*fixed, offsettable extension*



*fixed jib*



*swingaway/bifold with fly stowed on main boom*



*swingaway with fly/tele*



*swingaway/bifold without fly stowed on main boom*



*swingaway/bifold without fly*

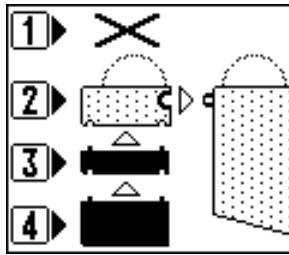


*fly stowed on main boom*

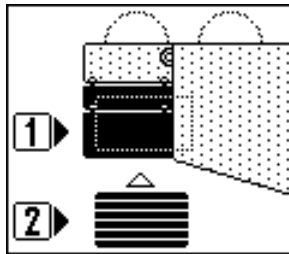


*bifold with fly stowed on main boom*

## 9.2 Appendix B: Detailed symbol explanation of counterweight options

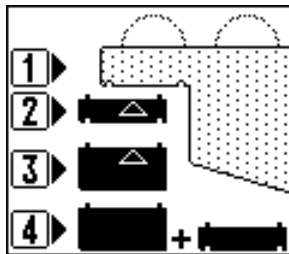


- 1** without auxiliary hoist structure
- 2** with mounted auxiliary hoist structure
- 3** with counterweight **A**
- 4** with counterweight **B**

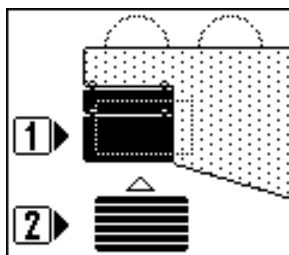


*only for cranes with auxiliary counterweight:*

- 1** without auxiliary counterweight
- 2** with auxiliary counterweight



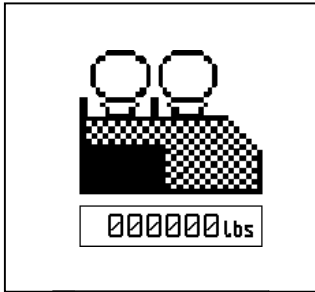
- 1** without counterweight
- 2** with counterweight **A**
- 3** with counterweight **B**
- 4** with counterweight **A + B**



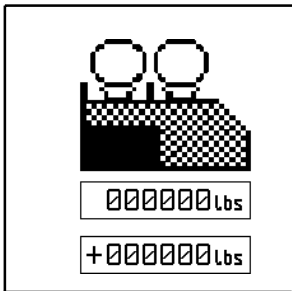
*only for cranes with auxiliary counterweight:*

- 1** without auxiliary counterweight
- 2** with auxiliary counterweight

## Appendix B: Detailed symbol explanation of counterweight options



- +** scroll up to the next pre-programmed counterweight configuration
- scroll down to the next pre-programmed counterweight configuration
- OK** press the O.K. button to confirm and to proceed with console programming



*only for cranes with superstructure counterweight and front bumper counterweight configuration:*

- +** scroll up to the next pre-programmed counterweight configuration
- scroll down to the next pre-programmed counterweight configuration
- OK** press the O.K. button to confirm and to proceed with console programming

## MANUAL REVISIONS

REV	DATE	NAME	DESCRIPTION
6	12/21/00	CSH	Added counterweight option page to Appendix B
7	3/27/01	MO	New cover page, page breaks.